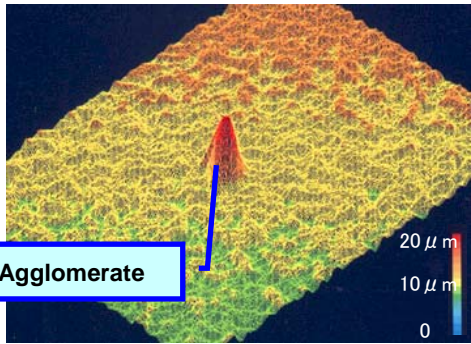


# Filter for COATING PROCESS

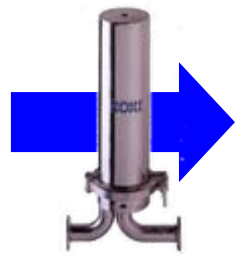
## Improving Coating Surface and Controlling Coating Thickness

### Barium Titanate Coating

Before filtration

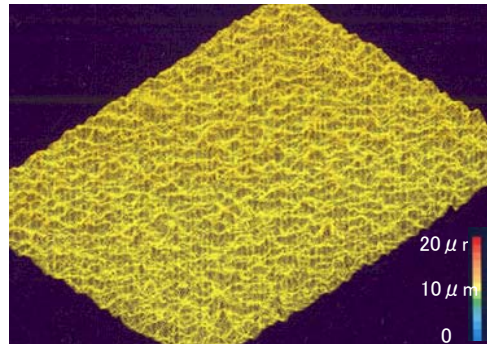


agglomerate on the surface  
Coating Surface

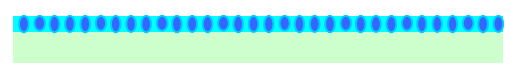
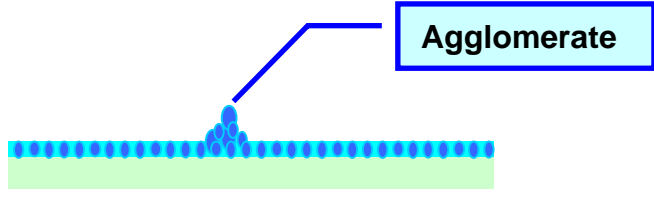


HC-10 Filter

After filtration



no agglomerate  
Coating Surface



## Wide Variations

application		recommendation
① for aggregations	➔	SHP SLS
② for sub-micron coating	➔	SHP CTX MGX
③ for safety	➔	MPX
④ for high viscosity fluid	➔	HC MPH

## One-touch chang-out operation



**Ez-Change**



Minimization of the loss

**Ez-ChangeXS**

## Selection guide for specific application

### Slurry

**SHP SLS**  
**HC MGX**

### Viscous

**SHP MPH**  
**HC MPX**

### Clear

**SHP SLS**  
**CTX MPX**

**ROKI**

**ROKI TECHNO CO., LTD.**

6-20-12, Minami-ohi, Shinagawa-ku

Tokyo, 140-8576 Japan

TEL +81-3-5764-1131 FAX +81-3-5764-0681

URL: [www.rokechno.co.jp](http://www.rokechno.co.jp)

E-Mail: [ppd@rokechno.co.jp](mailto:ppd@rokechno.co.jp)